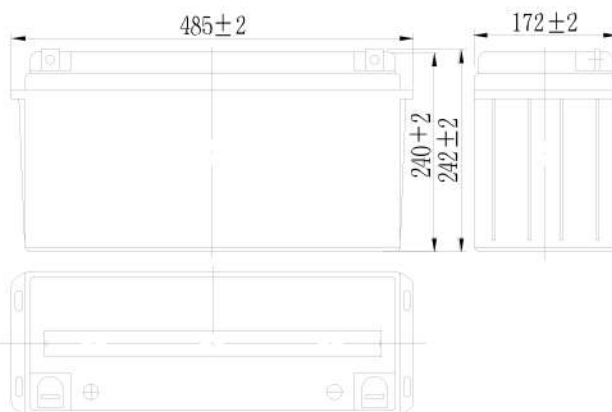
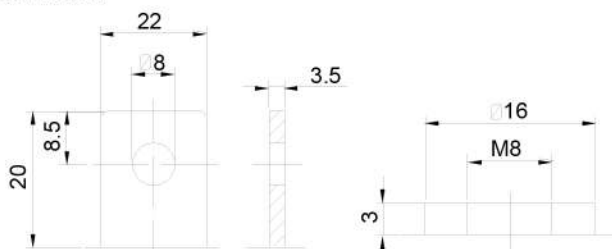


## Specifications

Nominal Voltage		12 V
Capacity (25°C)	10HR(10.8V)	150 Ah
	5HR(10.5V)	130Ah
	1HR(9.60V)	93Ah
Dimension	Length	485 ± 2mm (19.09inch)
	Width	172 ± 2mm (6.77inch)
	Height	240 ± 2mm (9.45inch)
	Total Height	T5: 242 ± 2mm (9.53inch) T11: 240 ± 2mm (9.45inch)
Approx. Weight		42kg
Terminal type		T5/T11
Internal resistance (Fully charged, 25°C)		Approx. 3.5mΩ
Capacity affected by temperature (10HR)	40°C	102%
	25°C	100%
	0°C	85%
	-15°C	65%
Self-discharge (25°C)	3 month	Remaining Capacity: 91%
	6 month	Remaining Capacity: 82%
	12 month	Remaining Capacity: 65%
Nominal operating temperature		25°C ± 3°C (77°F ± 5°F)
Operating temperature range	Discharge	-15°C ~ 50°C (5°F ~ 122°F)
	Charge	-10°C ~ 50°C (14°F ~ 122°F)
	Storage	-20°C ~ 50°C (-4°F ~ 122°F)
Float charging voltage(25°C)		13.50 to 13.80V Temperature compensation: -18mV/°C
Cyclic charging voltage(25°C)		14.50 to 14.90V Temperature compensation: -30mV/°C
Maximum charging current		45A
Terminal material		Copper
Maximum discharge current		1200A(5 sec.)
Designed floating life(20°C)		10~15 years



### Terminal



Terminal T5

Terminal T11

- ◆ Absorbent glass mat technology;
- ◆ Recognized by UL & CE;
- ◆ ABS container.

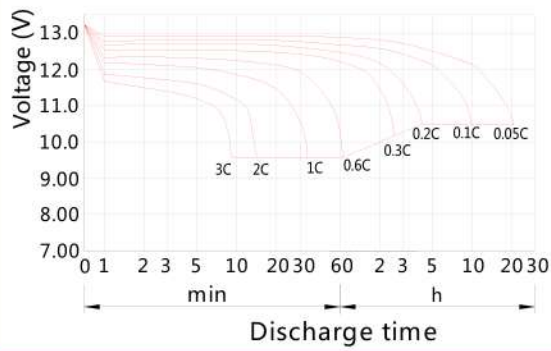
## Constant Current Discharge Characteristics (A, 25°C)

F.V/Time	10MIN	15MIN	30MIN	1HR	2HR	3HR	4HR	5HR	8HR	10HR	20HR
1.60V	329.95	259.7	156.62	9.35	55.02	40.8	33.13	27.96	18.71	16	8.2
1.65V	320.1	252.84	153.13	90.15	54.23	40.3	32.74	27.66	18.51	15.8	8.13
1.70V	307.26	243.88	148.66	87.96	53.13	39.6	32.24	27.26	18.31	15.6	8.05
1.75V	290.55	232.24	142.69	84.98	51.74	38.61	31.44	26.67	17.91	15.4	7.93
1.80V	269.25	217.31	134.93	81.09	49.85	37.31	30.55	25.87	17.51	15	7.78

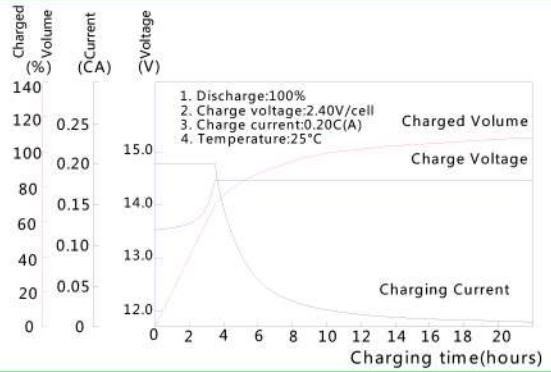
## Constant Power Discharge Characteristics (Watt, 25°C)

F.V/Time	10MIN	15MIN	30MIN	1HR	2HR	3HR	4HR	5HR	8HR	10HR	20HR
1.60V	569.15	460.7	288.56	174.13	105.47	79.2	64.68	54.83	37.11	31.9	16.4
1.65V	567.16	457.71	286.57	173.13	105.47	78.61	64.18	54.43	36.82	31.7	16.3
1.70V	550.25	445.77	279.6	169.15	103.48	77.41	63.18	53.73	36.42	31.3	16.1
1.75V	529.35	430.85	271.64	164.18	101.49	75.82	61.99	52.74	35.82	30.8	15.9
1.80V	499.5	408.96	258.71	157.21	97.91	73.63	60.4	51.44	34.93	30.1	15.6

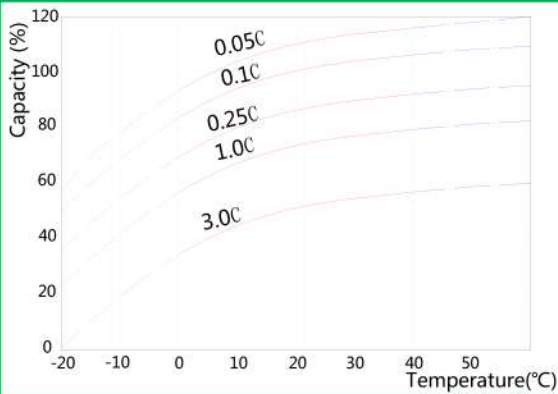
**Discharge Characteristics(25°C)**



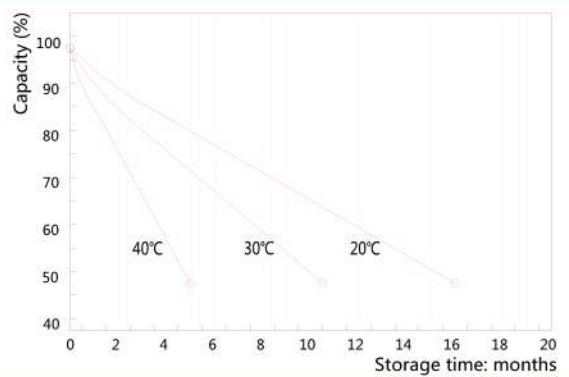
**Charging Characteristics(25°C)**



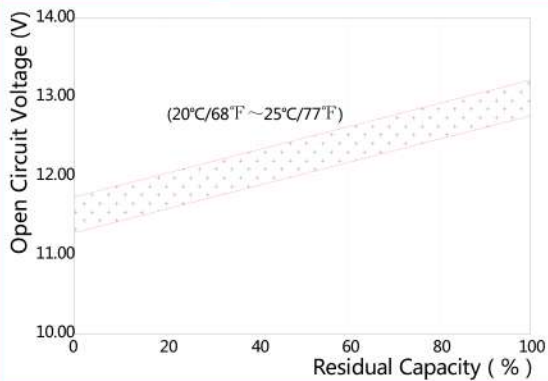
**Effect of Temperature on Capacity**



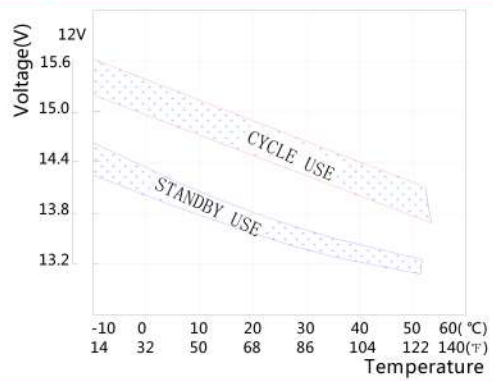
**Self-discharge Characteristics**



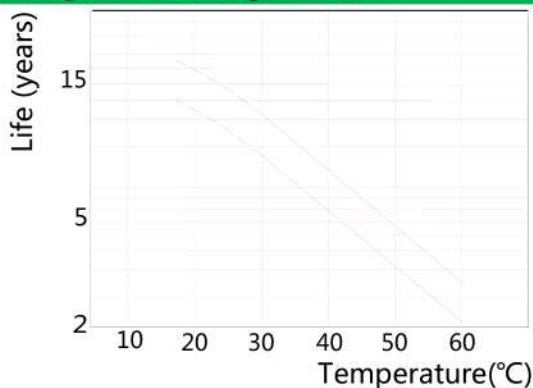
**The Relationship for Open Circuit Voltage and Residual Capacity (25°C)**



**The Relationship for Charging Voltage and Temperature**



**Floating Life on Temperature**



**Cycle Life on D.O.D(25°C)**

